






WELCOME TO
HOLMES MIDDLE SCHOOL!

2025

HOLMES
is where the heart is

BREAKOUT SESSIONS

Location	Session 1 (6:00-6:20)	Session 2 (6:30-6:50)	Session 3 (7:00-7:20)	Session 4 (7:30-7:50)
 Cafeteria	Welcome to Holmes	Welcome to Holmes	Welcome to Holmes	
 Main Hallway	Electives Fair	Electives Fair	Electives Fair	Electives Fair
 Lecture Hall	Course Request 101	Course Request 101	Course Request 101	
		World Languages A19	Math Pathways D3	Math Pathways D3

Holmes Middle School Administration



Holmes Administration



Mrs. Giron-
Principal



Ms.
Williams-
Dean of
Students



Ms.
Majmunder
- Dean of
Students/
Assessment
Coach



Mrs.
Meador-
6th grade
Assistant
Principal



Ms.
Lister-
7th grade
Assistant
Principal



Mr.
Hartman-
8th grade
Assistant
Principal

Student Services Team

- Karrah Dane, 6th grade counselor
- Mariam Amarir, ESOL Levels 1/2
- Jess Tippins, Director of Student Services
- Kelly Murphy, 8th grade counselor
- Erika Davis, 7th grade counselor



HOLMES MS VISION & MISSION

Vision

High Expectations
Opportunities for all
Lifelong learners
Mindful collaborators
Empathy and Equity for all
Strong Relationships

Mission

OUR MISSION is to create a supportive environment where resiliency flourishes, acceptance is embraced, curiosity thrives, and relationships are cherished. We cultivate confident, responsible student leaders through engaging academics, durable skills, and comprehensive social-emotional learning, empowering them to reach their full potential.

WELCOMING & SAFE ENVIRONMENT

Caring

We actively care about others in all parts of our school community.

Safe

We intentionally build physically and emotionally safe spaces for ourselves and others.

Community

We cultivate supportive and inclusive environments to create a sense of belonging for all.



BELL SCHEDULE

- 3RD PERIOD WILL MEET EVERYDAY
- SOAR (ADVISORY) IS 4TH PERIOD
- SOAR/INTERVENTION/ENRICHMENT IS 5TH PERIOD
- LUNCH DEPENDS ON YOUR STUDENTS TEACHER DURING THE 6TH OR 7TH PERIOD.

Time	Duration	Blue Day	White Day
7:30-8:55	85 minutes	1	2
8:59-9:44 ↓	45 minutes	3	
9:48-10:38 <i>*A lunch students dismissed</i>	50 minutes 30 min SOAR/ Intervention or Enrichment 15 min Break	5 SOAR / Intervention or Enrichment	4 SOAR
10:40 <i>*Remainder of students dismissed</i>		1st Break – 9:50-10:05 (15) SOAR/Enrichment – 10:08-10:38 (30) SOAR/Intervention – 9:48-10:18 (30) 2nd Break – 10:18-10:35 (15)	1st Break – 9:50-10:05 (15) SOAR – 10:08-10:38/40 (30) SOAR – 9:48-10:18 (30) 2nd Break – 10:18-10:35 (15)
10:44 – 12:43 A-C lunch classes dismissed	118 minutes 88-90 min class 30-31 min lunch	7 A Lunch 10:44 – 11:14 (30) A Class 11:14 – 12:43 (88) B Class 10:44 – 11:14 (30) B Lunch 11:14 – 11:44 (30) B Class 11:44 – 12:43 (58)	6 A Lunch 10:44 – 11:14 (30) A Class 11:14 – 12:43 (88) B Class 10:44 – 11:14 (30) B Lunch 11:14 – 11:44 (30) B Class 11:44 – 12:43 (58)
12:46 D lunch dismissed		C Class 10:44-11:44 (60) C Lunch 11:44 – 12:14 (30) C Class 12:14 – 12:43 (28) D Class 10:44 – 12:14 (90) D Lunch 12:14 – 12:46 (31)	C Class 10:44-11:44 (60) C Lunch 11:44 – 12:14 (30) C Class 12:14 – 12:43 (28) D Class 10:44 – 12:14 (90) D Lunch 12:14 – 12:46 (31)
12:50-2:15*	85 minutes	9	8

*No bell at 2:15 / Staggered dismissal announced through PA

ARRIVAL

/DISMISSAL

- Doors open at 7:10 am
- Classes start at 7:30
- Kiss and Ride line does back up all the way to Braddock Road!
(especially w/ inclement weather and beginning of school year)
- Dismissal starts around 2:10 (students are dismissed by hallway)



COURSE OPTIONS AT HOLMES MIDDLE SCHOOL





Open Enrollment- Honors Description

- At Holmes Middle School we believe ALL students can thrive in a rigorous and challenging learning environment.
- All of our 6th grade students will take honors level Social Studies classes.
- Students will be able to choose between on level Language Arts and Science or Honors level.
- Students will choose between math 6 and math 6 advanced.

ACADEMIC RIGOR AND DIFFERENTIATION

Honors	General Education	Team-Taught Special Education & ESOL	Self-Contained Special Education & ESOL
<ul style="list-style-type: none">● On-level pacing● Increased Rigor● Emphasis on independence and Autonomy● Develop Expertise	<ul style="list-style-type: none">● On-level pacing● Access to grade level content● All courses embedded with IB and Portrait of a Graduate skills	<ul style="list-style-type: none">● General Education class and setting with peers● Two teachers: General Education Teacher Special Education Teacher<ul style="list-style-type: none">● Access to grade level content with the opportunity for extra support	<ul style="list-style-type: none">● Special Education setting● Small class sizes (typically no more than 12 students)● Special Education teacher and sometimes an Instructional Assistant (IA)● Access to grade level content that, at times, can be modified to students individual levels.

On Level vs. Honors Classes

What makes Honors classes different?

- Honors classes *dive deeper* into topics
- Allow you to work more independently
- Encourage creativity and higher level thinking
- Could open up other opportunities in HS!

Math 6 or Math 6 Advanced

- Math 6 is 6th grade math and students take the 6th grade math SOL at the end of the year
- Math 6 Advanced is 7th grade math and students take the 7th grade SOL at the end of the year
- More information about math options is available in Sessions 3 and 4 this evening in D3

Course Options for Math

6th Grade

Math 6
Math 6 Advanced

7th Grade

Math 7
Math 7 Honors
Algebra I (HS Credit)
Algebra I Honors (HS Credit)

8th Grade

Math 8 (PreAlgebra)
Algebra I (HS Credit) & Algebra I Honors (HS Credit)
Geometry Honors (HS Credit)

LET'S SOAR! SOAR TIME AT HOLMES

MS


SOAR DEFINITION: *SOAR Time is school-wide time dedicated to developing students' academic and SEL skills and building positive relationships.*

How will it work?

- SOAR is your child's 4th period class that meets every day
- The first 20 days of school is all SOAR
- Later in the year it will be about twice a week once intervention starts
- Small class sizes lend to a strong sense of community

THIS IS HOW WE

SCHOOLWIDE LESSONS
ORGANIZATION
ACADEMICS
READING & REFLECTION



REACH, CHALLENGE, AND PREPARE EVERY STUDENT FOR SUCCESS IN SCHOOL AND LIFE.

What Happens During SOAR?

SOAR is your child's home base at Holmes.

During SOAR, students will...

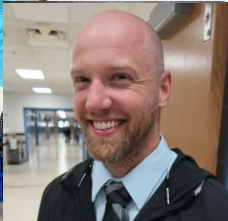
- **Build positive relationships & class community.**
- Develop students' academic and SEL skills
- Learn and practice skills (i.e. digital citizenship, organization, SEL skills, etc...).
- Have fun!



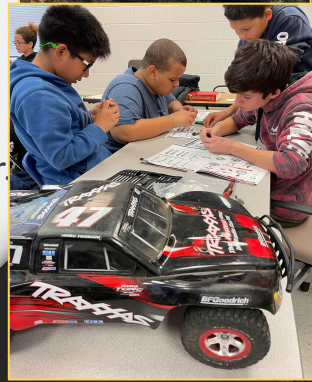
AFTER SCHOOL PROGRAM



- ❑ The After School Program is FREE and available to all Holmes Middle School Students from 2:15-4:45 Monday through Friday.
- ❑ **Bus Transportation** is available: Monday - Thursday
- ❑ **Snacks** are provided each day for all students staying after school.
- ❑ **After-School Program Highlights:**
 - ❑ **Over 600 students stay each week!**
 - ❑ **More than 40 different clubs & activities** offered throughout the school year
 - ❑ **These include:** Soccer, Fashion, Fitness, Art, Flag Football, Coding, Basketball, Theatre, Film, Volleyball, Cooking, Lego Builders, Anime, Robotics, Esports, and more!
- ❑ **Communication** - Holmes Website, News You Choose, Schoology, & Email.



Mr. Kruk
After-School Specialist
mjkruk@fcps.edu



IMPORTANT UPCOMING DATES

- PARENT COFFEE (ACADEMIC ADVISING) IN PERSON & ZOOM
 - FEBRUARY 11TH 9:00-10:00 AM
 - FEBRUARY 14TH 1:00-2:00 PM
 - FEBRUARY 19TH 5:00-6:00 PM *ZOOM ONLY
- ACADEMIC ADVISING AND COURSE SELECTION - THROUGH FEBRUARY
- ALL COURSE SELECTION FORMS ARE DUE FEBRUARY 28TH
 - A. RISING 6TH WILL RETURN TO FEEDER ELEMENTARY

HOW CAN YOU STAY CONNECTED?

Sign up for News you Choose



Follow us on Instagram
@holmesmsfcps

Join the PTA

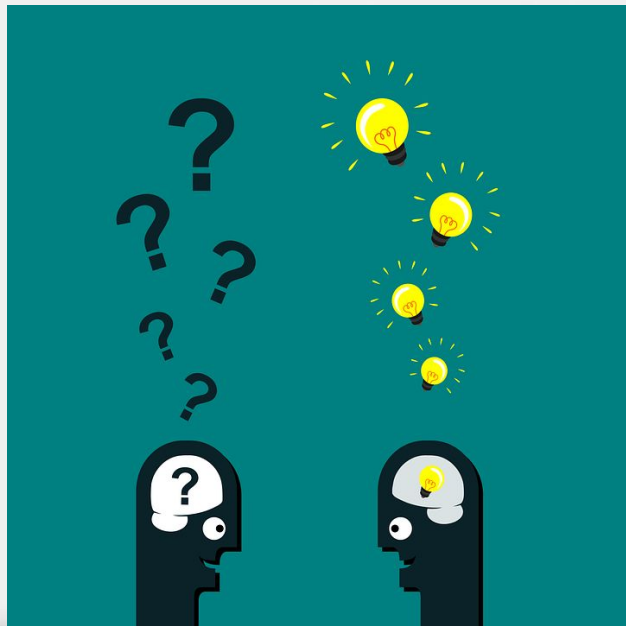


Sign up for Parentvue




**Holmes families email
mkmollick@fcps.edu

**ES families contact your
front office staff to sign up

Questions?



BREAKOUT SESSIONS

Location	Session 1 (6:00-6:20)	Session 2 (6:30-6:50)	Session 3 (7:00-7:20)	Session 4 (7:30-7:50)
 Cafeteria	Welcome to Holmes	Welcome to Holmes	Welcome to Holmes	
 Main Hallway	Electives Fair	Electives Fair	Electives Fair	Electives Fair
 Library	Course Request 101	Course Request 101	Course Request 101	
		World Languages A19	Math Pathways D3	Math Pathways D3